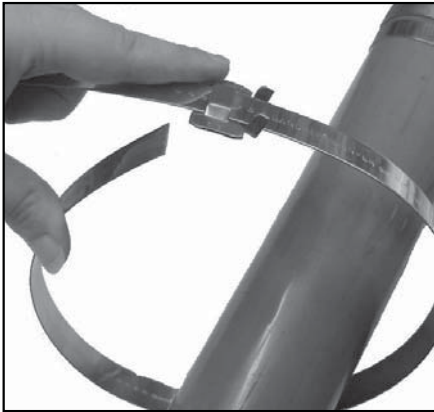
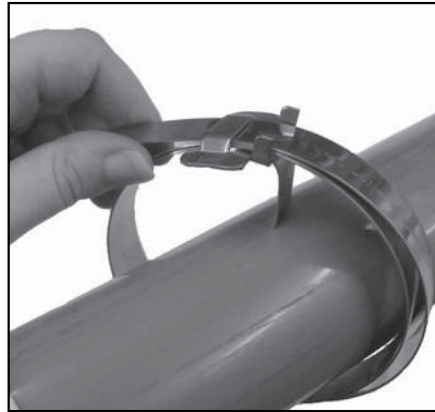


Operating Instructions

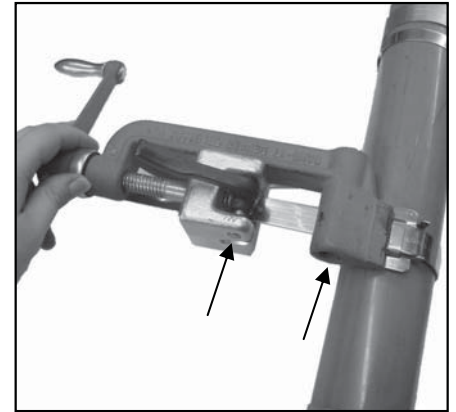


1. Band may be used from bulk roll as this *completely eliminates waste of band*. Slide buckle on band as shown, bringing end of band around object to be clamped and again through buckle.

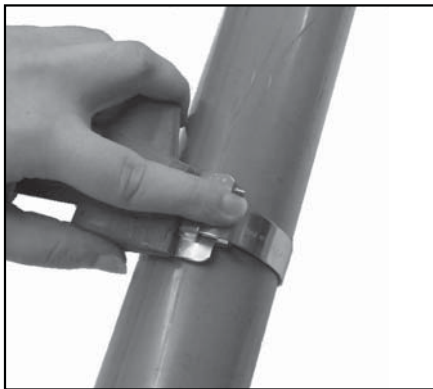
NOTE: The tension screw thread should be lubricated regularly.



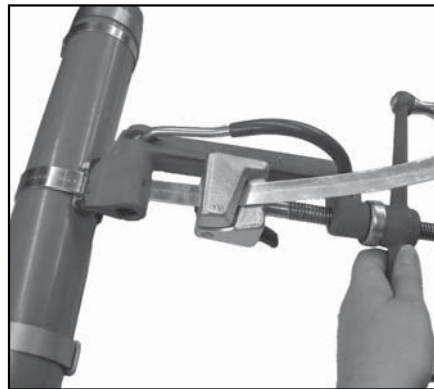
2. Continue band around object once more and again through buckle. *Double banding develops a great deal more radial compression than single banding. Bend end of band under buckle.*



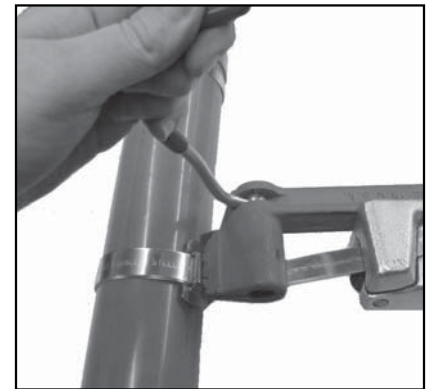
3. Place band in open of tool nose and gripper block. Move into slot as far as possible to avoid buckle sliding into tool nose. Apply tension by turning handle of tool.



4. Place finger on band at buckle bridge while tensioning with the tool handle. As you are turning handle, *maximum pressure is being exerted by the band around object being clamped. Stop turning handle.*



5. Roll tool over buckle, backing off with tension handle throughout entire rolling operation. Failure to back off with tension handle through-out entire course of roll-over may result in breaking of band. There is no loss of tension as band released is used up in the bend.



6. Pull cutting handle to cut the band.



7. Remove tool, holding stub of band down with thumb.



8. Hammer down buckle ears to hold band stub in place to complete clamping.